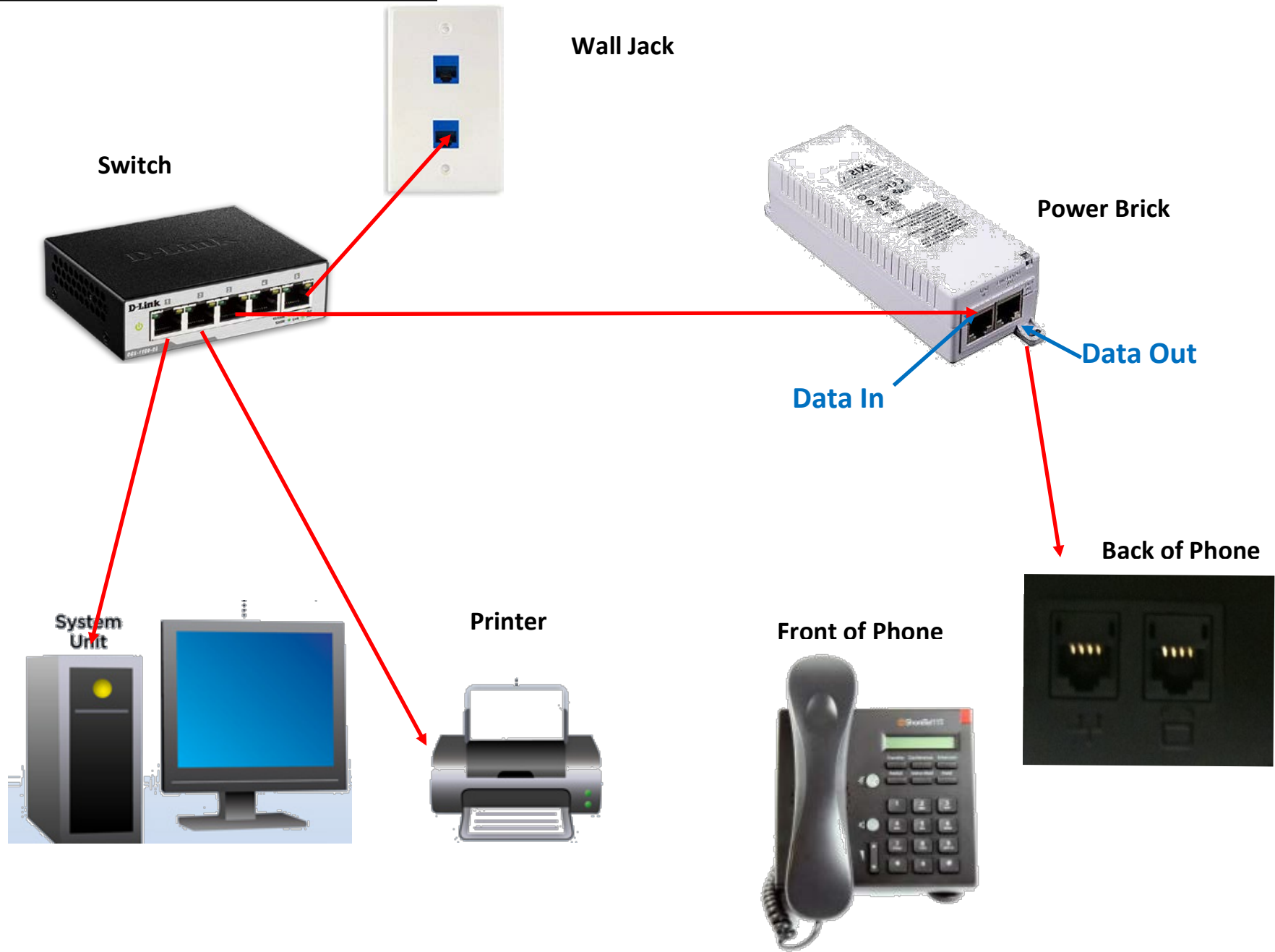


Use this set up if you have one drop and need a switch to support several devices.



If your Wall Jack is Single, use this set up. But if you have two drops your system will run faster if your computer cable goes to the second drop—not the phone.

See this arrow



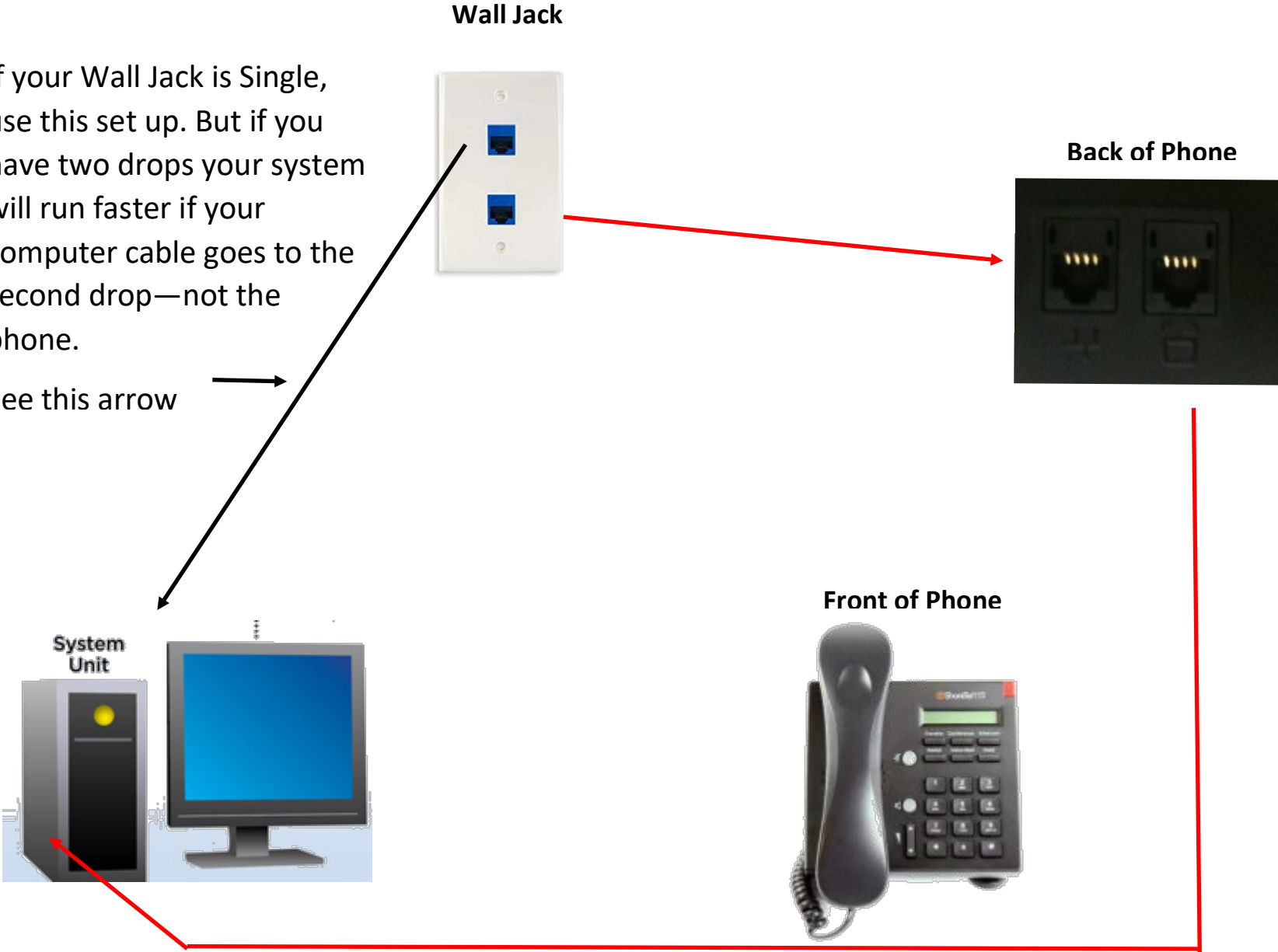
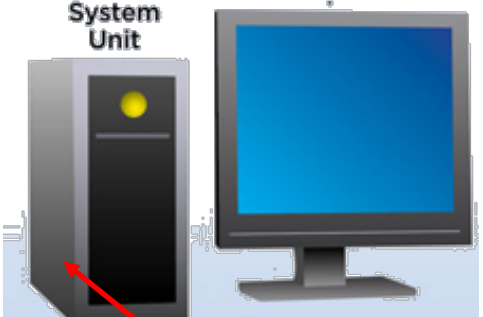
Wall Jack



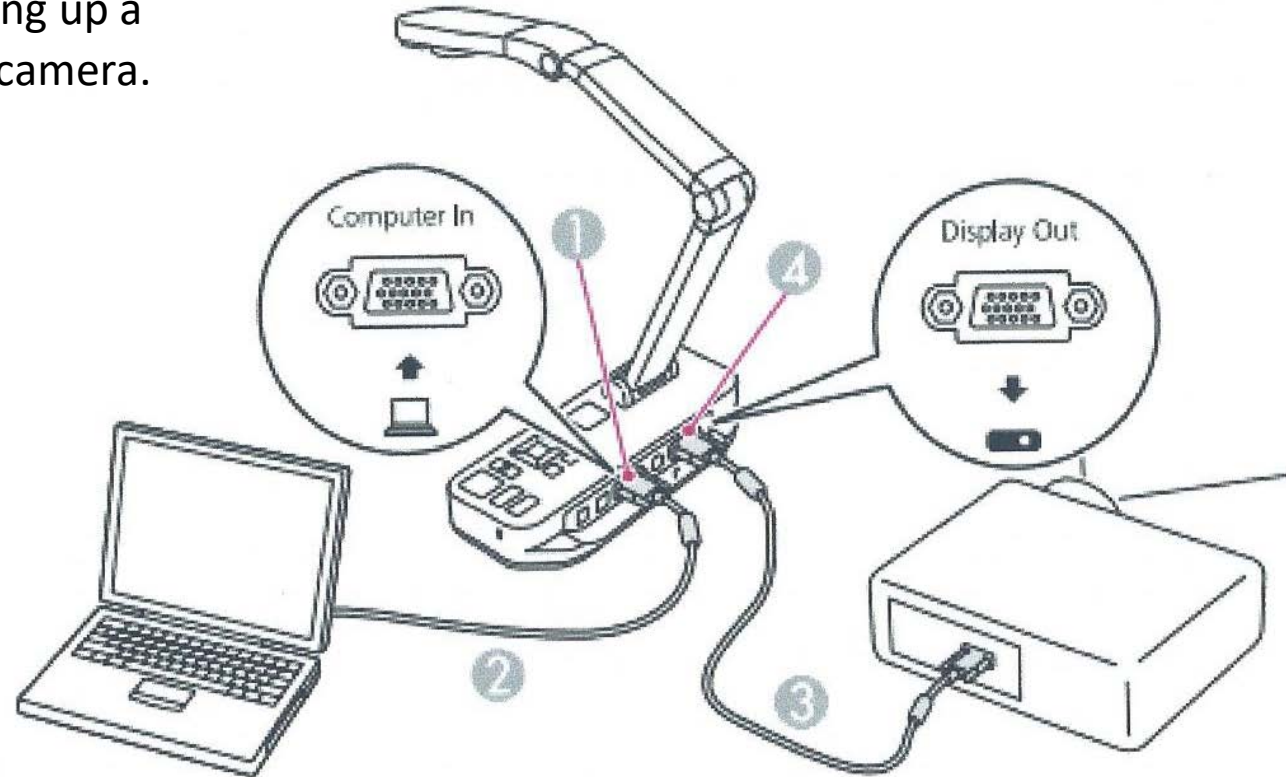
Back of Phone



Front of Phone



This diagram will assist you in setting up a document camera.



- ① **Computer In port**
- ② **VGA cable**
- ③ **VGA cable**
- ④ **Display Out port**