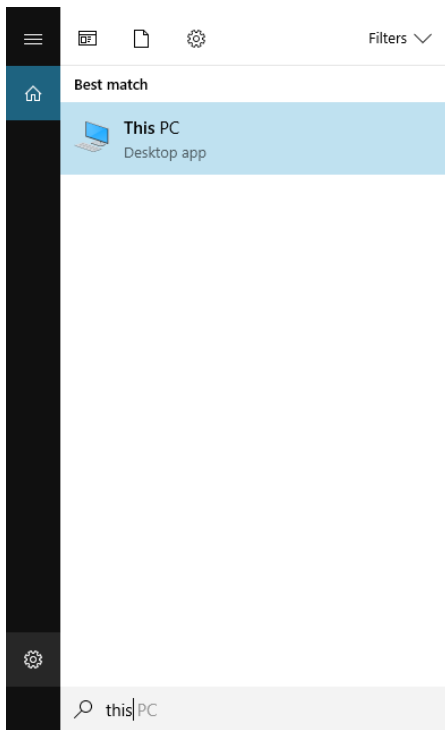
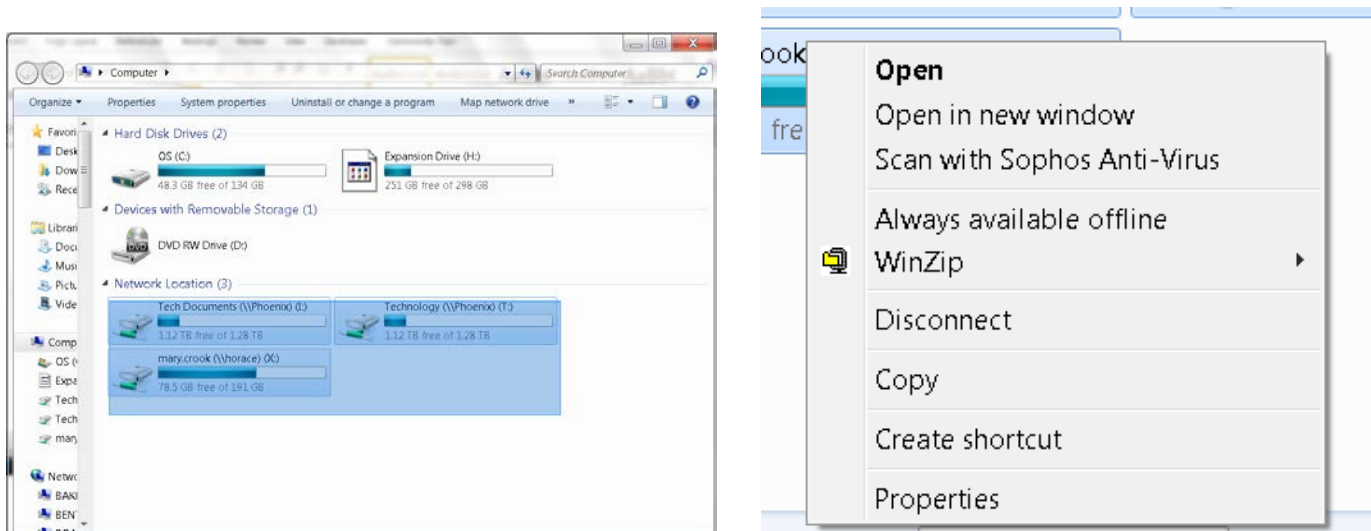


Type “this pc” in the search window at the botom left of the screen.



Under the Network Locations area highlight all the network drives.



Right click on the highlighted area and click on “Disconnect” in the menu. If you get an error select the option to continue to disconnect and then after they are gone you may log off and then back on or simply restart your computer. The correct drives and their settings should come back after this procedure is completed.