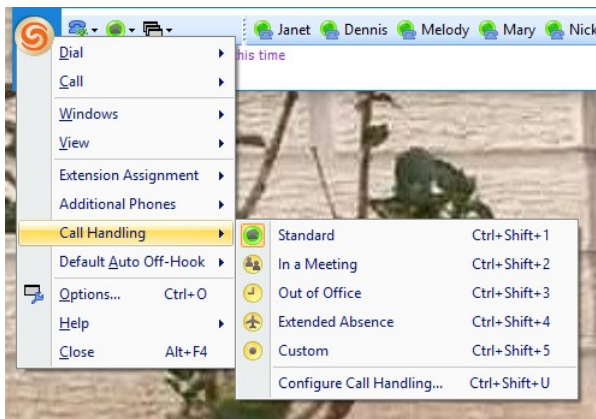


To change the Mode you are in



Through the manager, click on the green circle in your manager toolbar to display the options. Or you can click on the orange circle and then on the Call Handling option to get the menu.



You can configure where the calls will go in the “Configure Call Handling” area.

You can also change it through the menu options when dialing in to your voicemail. After dialing in and following the prompts to change your mail box options (7) you will choose 2 to change the mode. Then follow the prompts to change to your choice.